



**Discover our pods, You'll love it like a home**

**By Irsa**



# Introducing MiPod Solutions

Following many years working in the Bar and shopfitting industry the directors of Mipod Solutions were asked to develop a range of glamping pods for the leisure industry.

- Production of the first custom glamping pods started in 2014, operating under the brand Mipod Solutions.
- We aim to deliver high-quality products at competitive prices, incorporating skills gained in the fit-out industry. Key aspects of all our units include the following.
- Commercial Mobile Chassis are utilised with galvanised options.
- All exterior finishes are low maintenance with an average serviceable life of over 10 years.
- Interior finishes combine bright spray-finished walls and pine boarding to give a traditional feel and a bright, airy interior.
- Internal furniture is designed to give maximum storage whilst maintaining a functional living space.
- Designs have evolved through the years, incorporating eco-friendly materials were appropriate.

**By Irsa**





# Our Pod Range Overview

## Models Available:

The Midi



The Premier



The Royal



The Windsor



The Norton



The Langley



The Titan



Shepherd Hut One & Two





## The Midi

The development of the Mipod range offers the smallest unit, packed with all the necessary comforts for a self-contained experience, converting from a recreational pod to a space for sleeping and including the following.

- Fully glazed door to allow more light into the unit.
- Open living space with room for a double sofa bed incorporating storage under.
- Food prep unit housing a small fridge, built-in microwave, kettle and toaster.
- Single sink base unit with SS bowl and storage below.
- Low-level open storage unit for clothes, etc.
- Drop-down space-saving table with two stools.
- Water-resistant composites click flooring.
- Under-floor heating with the option for an electric radiator.
- Option for a Velux-style roof light.
- Bathroom/Wet Room with shower, Wash hand Basin & WC, window at high level.
- Hot water boiler mounted on the rear of the building (Porch & Decking)

**By Irsa**





## The Midi

By Irsa

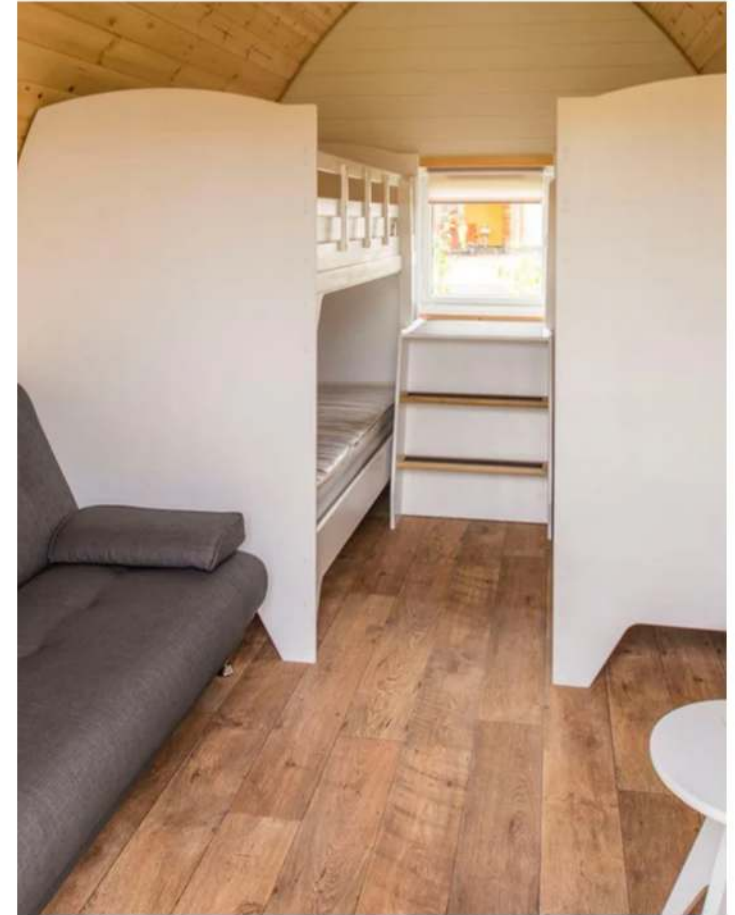




# The Midi

By Irsa





## The Midi

By Irsa



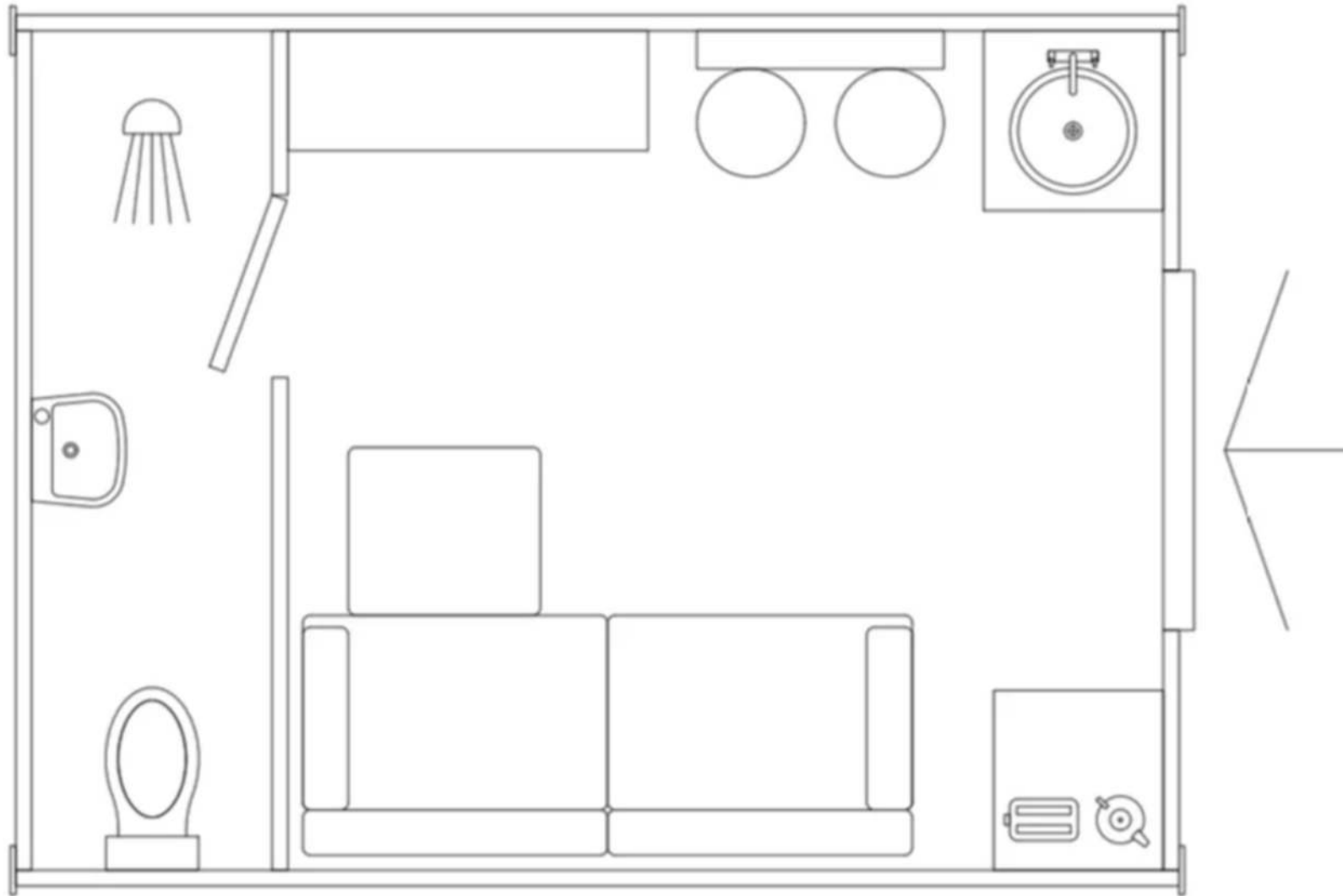
# The Midi

By Irsa





By Irsa



**By Irsa**





Sleeping	Kitchen Facilities	Bedroom/Dining room	Storage Space	Outdoor Features	Toilet Amenities	Dimensions
2	Fridge		Clothing storage	Dawn to Dusk sensor	Wet room with rain head shower	External L4 xW2.7 x H2.9 metres
	Microwave		Bed storage	Or a Timed light Sensor	Low Level WC	
	Kettle				Wash Hand Basin	
	Toaster				Wet wall boarding and pine	
	Single sink base unit					

By Irsa



## The Premier

The Premier range is ideal for couples looking for that short break with all the comforts of traditional living, and incorporates a small porch and decking

- Various door options are available, but the standard is a single door with one side light.
- Open living space with a built-in double bed.
- Fully functional kitchen area with sink, two-ring hob, three drawer base unit, one dry storage unit, sink base unit, and food prep unit.
- Low-level open storage unit for clothes, etc.
- Circular dining table with two stools.
- Water-resistant composite click flooring.
- Under-floor heating with the option for an electric radiator.
- Option for a Velux-style roof light.
- Bathroom with shower, Wash hand Basin & WC
- Hot water boiler mounted on the rear of the building

**By Irsa**





## The Premier

By Irsa





By Irsa





By Irsa





## The Premier

By Irsa





By Irsa

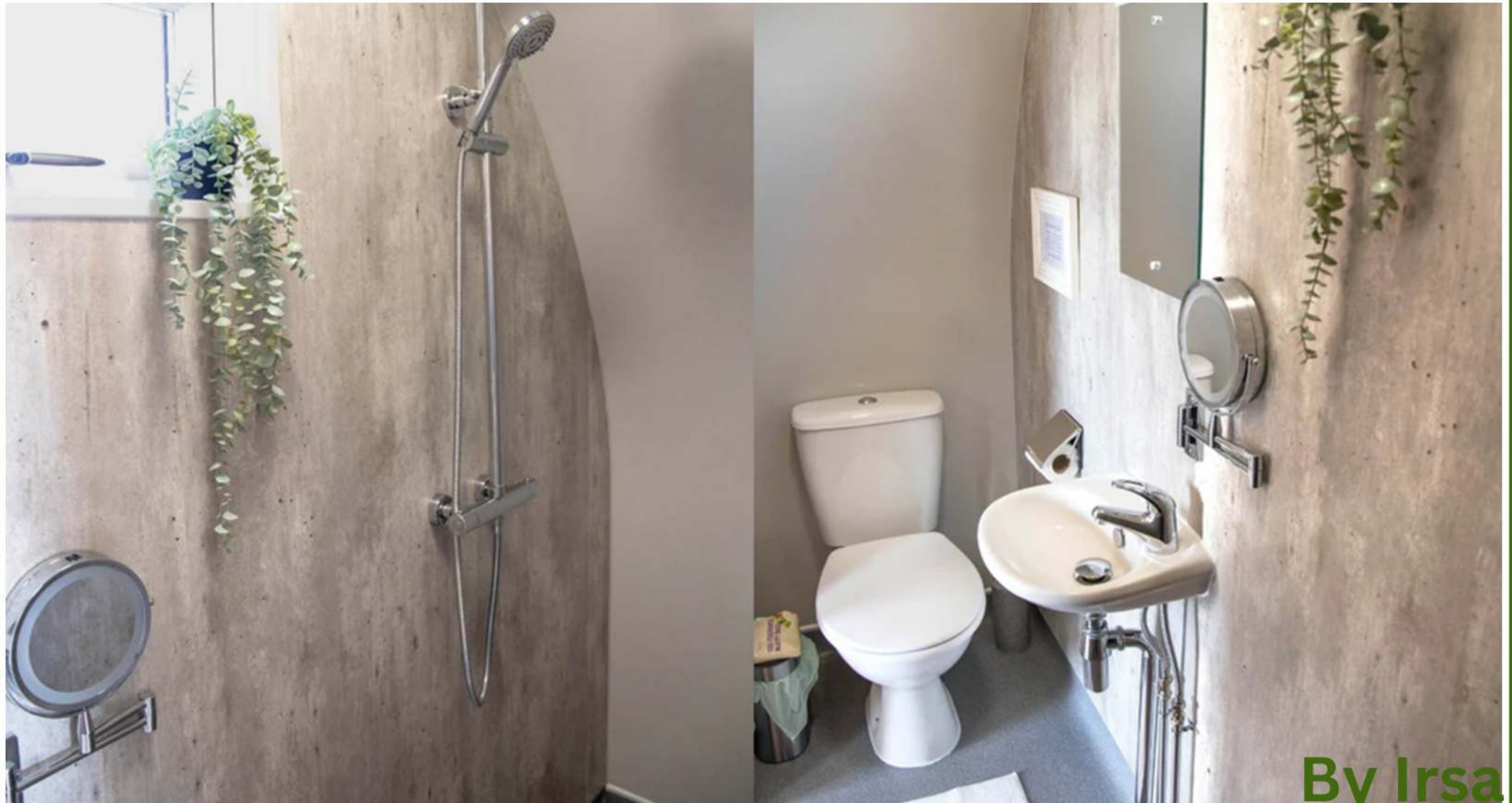


By Irsa

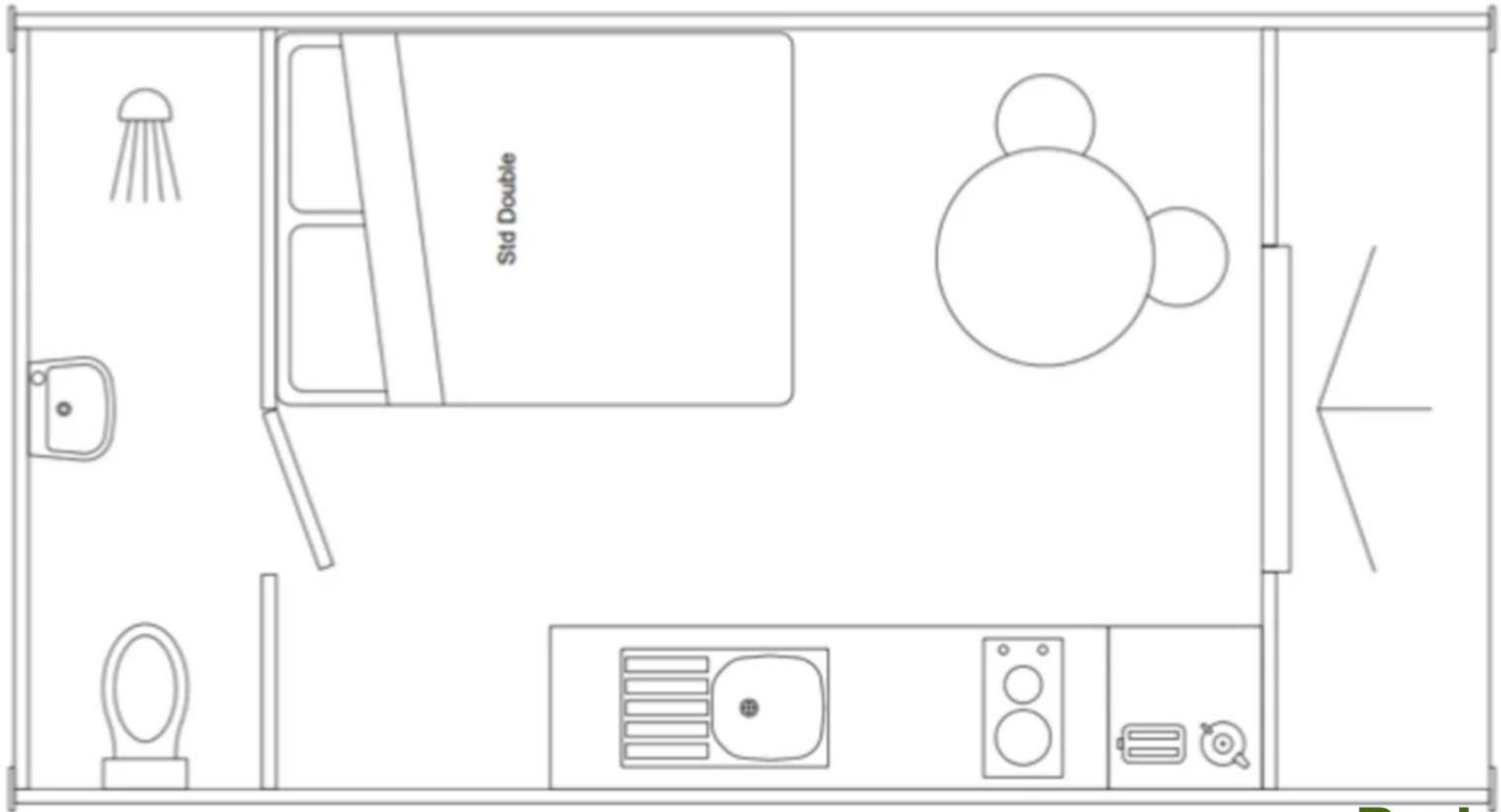




**By Irsa**



By Irsa



**By Irsa**





Sleeping	Kitchen Facilities	Bedroom/Dining room	Storage Space	Outdoor Features	Bathroom Amenities	Chassis Details & Pod Dimensions
2 in Fixed Bed	Food Prep Unit to House Fridge, Microwave, Kettle,	Built-in Double bed, Water water-resistant mattress,	Open Fronted Wardrobe with Hanging Space.	Dawn to Dusk sensor	cubicle shower	Rolling Chassis compliant with Planning
Optional additional 2 using Sofa Bed	1 No 500 Draw Pack, 2 No 500 Base units with Adjustable Shelves	dining table with two stools	Ample Storage Space Under Bed	Or a Timed Light Sensor	Toilet	Length 5.5 m Width 3.0 m Height 3.0 m
	25mm Kitchen worktop with electric Hob,	Under Floor Heating		Velux Style Roof Light	Basin	
	Kitchen sink with High Neck Tap and Drainer	Space For Sofa Bed		Option for Roof Light in Bathroom	Altro Style Safety Flooring with Welded Cove	
	Single sink base unit	LVT Water Resistant Click Flooring		Porch with Decking	Mirror, Towel Rail, Toilet Roll Holder	

By Irsa



## The Royal

The Royal range offers much more space and is ideal for up to 4 people. Its increased space allows the sofa bed to be used for extra members of the group.

- Various door options are available, but the standard is a circular window with side lights.
- Open living space with a built-in double bed accessible from the side.
- Fully functional kitchen area with sink, two-ring hob, three drawer base unit, one dry storage unit, sink base unit, and food prep unit.
- Wardrobe unit adjacent to kitchen with open shelves and hanging rail.
- Circular dining table with four stools.
- Water resistant composite click flooring.
- Under-floor heating with the option for an electric radiator.
- Velux style roof light to the lounge area.
- Bathroom with shower, Wash hand Basin & WC (Option for wet room)
- Hot water boiler mounted on the rear of the building
- Space for sofa bed

**By Irsa**



**The Royal**

**By Irsa**





By Irsa





By Irsa







By Irsa





# The Royal

By Irsa



By Irsa





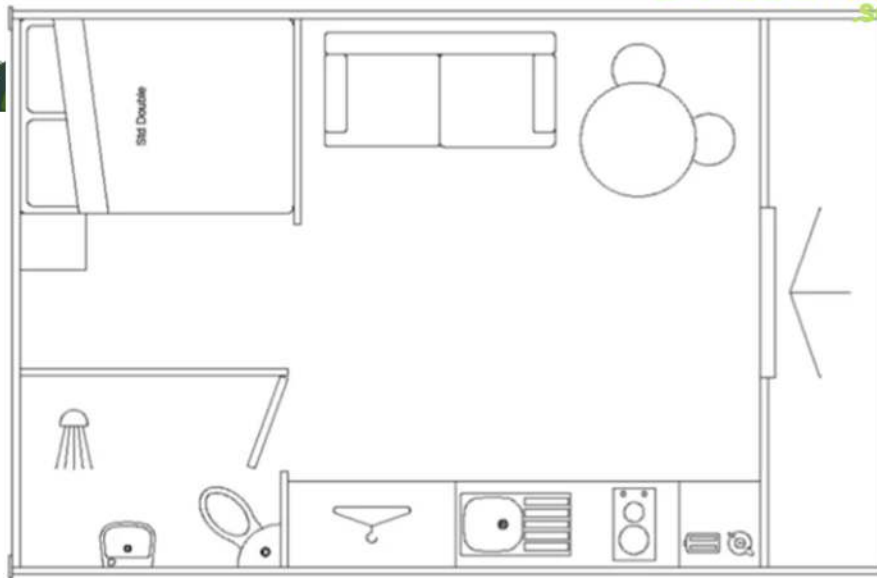
By Irsa



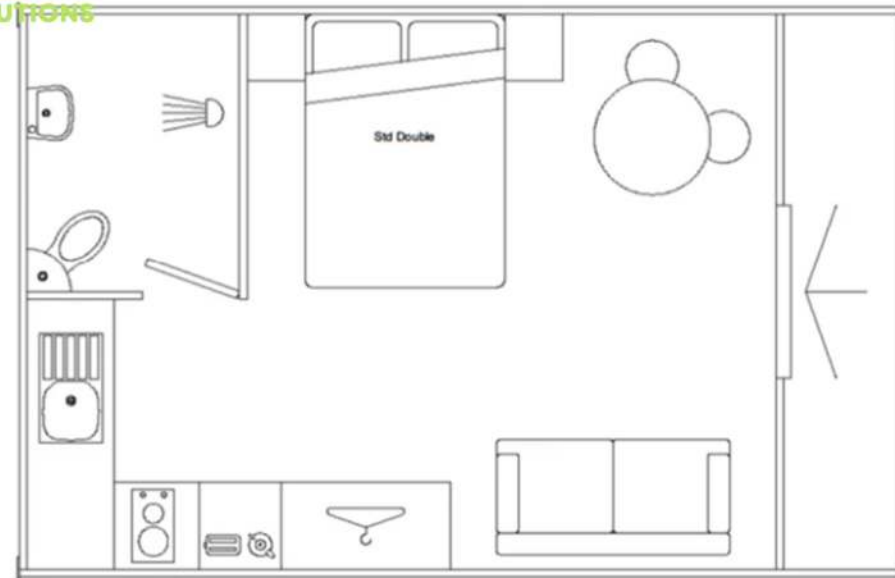
By Irsa



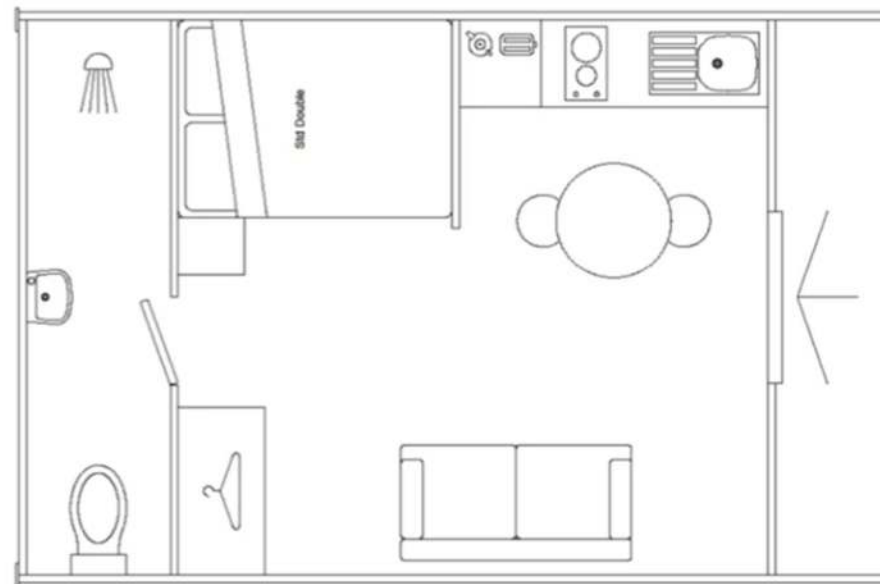
LAYOUT 1



LAYOUT 2



LAYOUT 3



**By Irsa**



Sleeping	Kitchen Facilities	Bedroom/Dining room	Storage Space	Outdoor Features	Bathroom Amenities	Chassis Details & Pod Dimensions
2 in Fixed Bed	Food Prep Unit to House Fridge, Microwave, Kettle, Toaster	Built in Double bed With Side Access, Water Resistant Mattress, Modesty Light above Bed	Double Open Fronted Wardrobe with Hanging Space.	Dawn to Dusk sensor	Quadrant Shower Cubical With Rainfall Shower Head	Rolling Chassis compliant with Planning Requirements
Optional additional 2 using Sofa Bed	1 No 500 Draw Pack, 2 No 500 Base units With Adjustable Shelves	dining table with two/Four stools	Ample Storage Space Under Bed	Or a Timed light Sensor	Close Coupled Toilet	Length 6.0 m Width 4.0 m Height 3.0 m
	25mm Kitchen worktop with electric Hob, Brushed Aluminium Splash Back,	Under Floor Heating		Velux Style Roof Light to Lounge.	Wash Hand Basin	
	Kitchen sink with High Neck Tap and Drainer	Space For Sofa Bed		Option for Roof Light in Bathroom	Altro Style Safety Flooring with Welded Cove Skirting	
	Single sink base unit	LVT Water Resistant Click Flooring		Porch with Decking	Mirror, Towel Rail, Toilet Roll Holder	By Irsa





## The Windsor

The Windsor range offers a family-friendly experience, sleeping 5 people, and with the option of utilising a sofa bed to accommodate up to 2 more. A very spacious unit that can accommodate larger numbers of guests without feeling cramped.

- Various door options are available, with the most popular being a circular window with side lights.
- Open living space with a built-in double bed accessible from the side and one over two beds positioned at the rear of the unit.
- Fully functional kitchen area with sink, two-ring hob, three drawer base unit, one dry storage unit, sink base unit, and food prep unit.
- Low-level wardrobe and storage unit on lounge wall
- Circular dining table with four stools.
- Water-resistant composites click flooring.
- Under-floor heating with the option for an electric radiator.
- Velux style roof light to the lounge area.
- Bathroom with shower, Wash hand Basin & WC (Option for wet room)
- Hot water boiler mounted on the rear of the building
- Space for a sofa bed

**By Irsa**





By Irsa





**By Irsa**



**By Irsa**



MiPOD



By Irsa



By Irsa



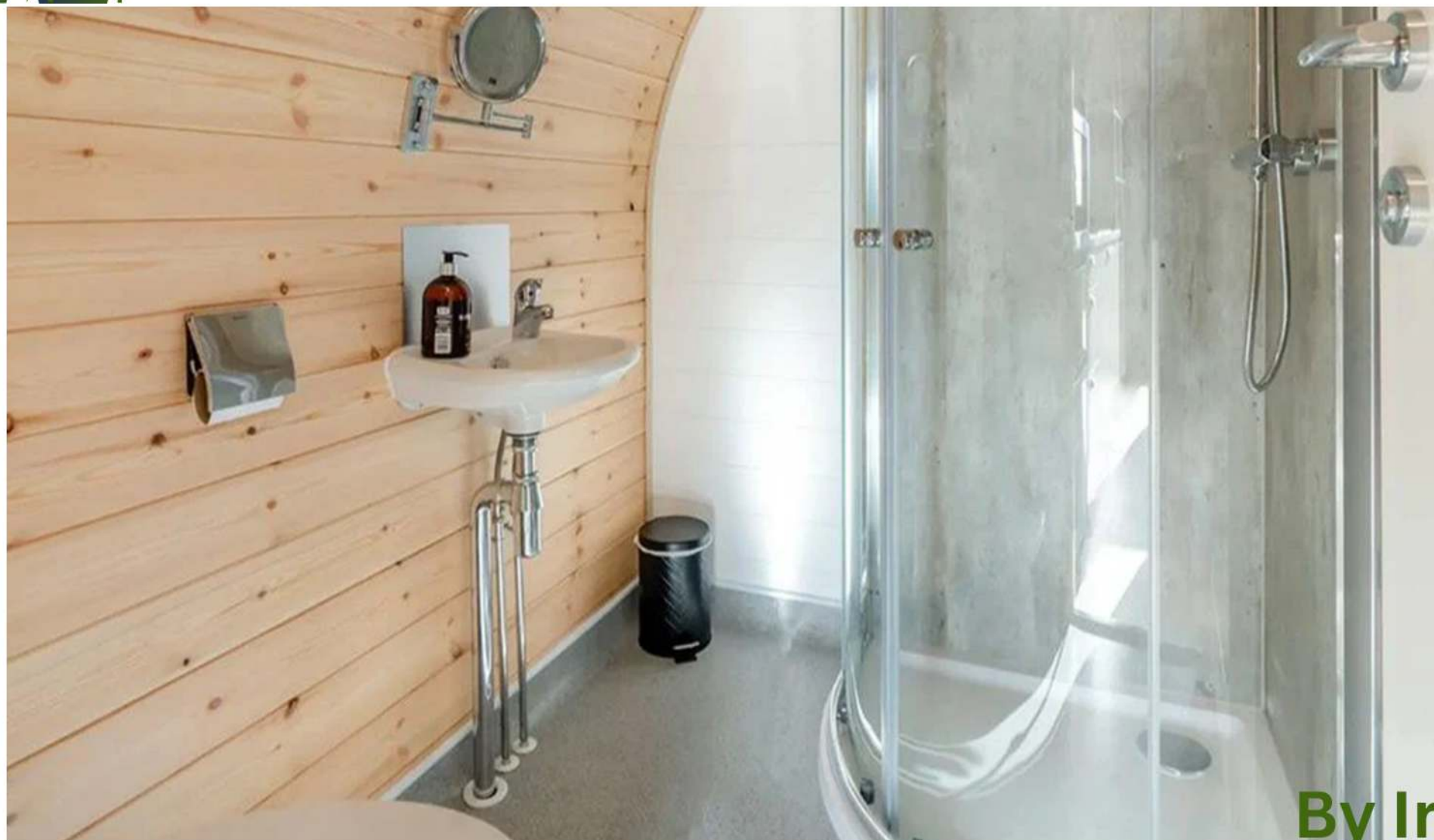


**By Irsa**

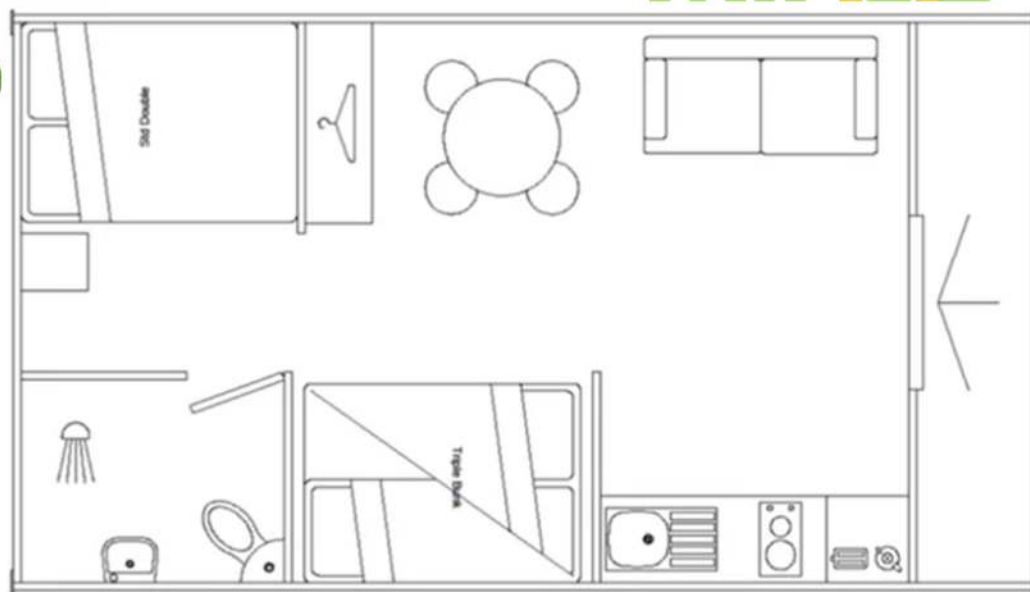


**By Irsa**



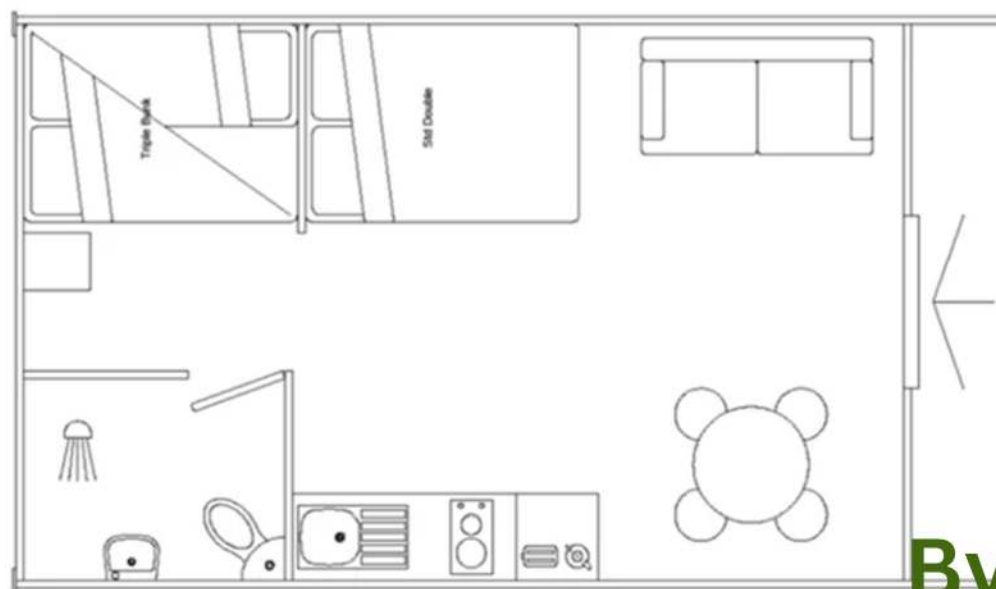


By Irsa



LAYOUT 1

LAYOUT 2



By Irsa





Sleeping	Kitchen Facilities	Bedroom/Dining room	Storage Space	Outdoor Features	Bathroom Amenities	Chassis Details & Pod Dimensions
Five 2 double 1 Single	Food Prep Unit to House Fridge, Microwave, Kettle, Toaster	Built-in Double and One over Two Bunk Beds, Water-Resistant Mattress,	Purpose-made Low Level Wardrobe Two Drawers with Open Shelving	Dawn to Dusk sensor	Quadrant Shower Cubicle with Rainfall Shower Head	Rolling Chassis compliant with Planning Requirements
Optional additional 2 using Sofa Bed	1 No 500 Draw Pack, 2 No 500 Base units with Adjustable Shelves	dining table with two/Four stools	Ample Storage Space Under Beds	Or a Timed Light Sensor	Close-Coupled Toilet	Length 7.0 m Width 4.0 m Height 3.0 m
	25mm Kitchen worktop with electric Hob, Brushed Aluminium	Under Floor Heating		Velux Style Roof Light to Lounge.	Wash Hand Basin	
	Kitchen sink with High Neck Tap and Drainer	Space For Sofa Bed		Option for Roof Light in Bathroom	Altro Style Safety Flooring with Welded Cove Skirting	
	Single sink base unit	LVT Water Resistant Click Flooring		Porch with Decking	Mirror, Towel Rail, Toilet Roll Holder	

**By Irsa**



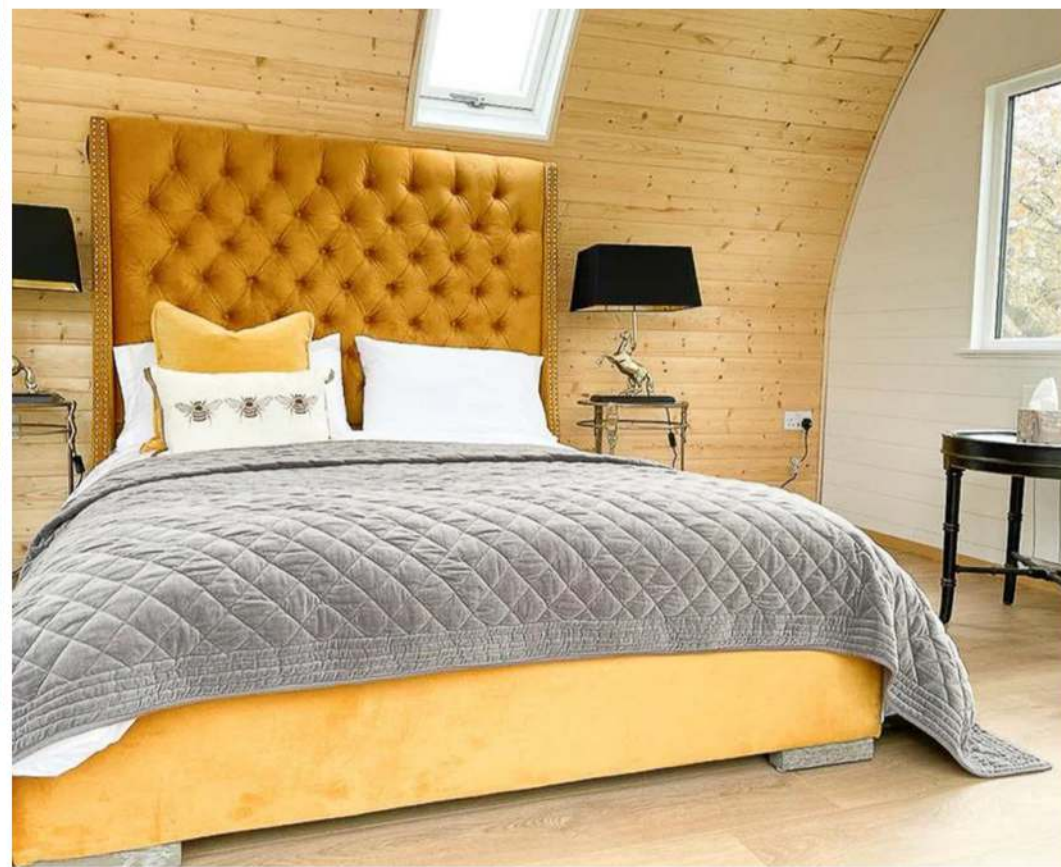
## The Norton

The Norton is a smaller version of the Langley and is ideal for locations with restricted access, designed for couples offering a luxurious glamping experience for two people, making use of a spacious living area.

- The unit features a standard circular window with side lights.
- It has an open living space with a free-standing double bed.
- A fully functional kitchen area, low-level wardrobe, and circular dining table with two stools provide all that is needed for those who wish to self-cater.
- Hard-wearing, water-resistant composite click flooring and underfloor heating, along with an option for an electric radiator, make cleaning of the unit incredibly easy.
- The unit also has a Velux-style roof light, a bathroom with a shower, washbasin & WC, and an external hot water boiler.
- Sofa bed is a must for this unit if you wish to make the experience available for young families.

**By Irsa**





**By Irsa**



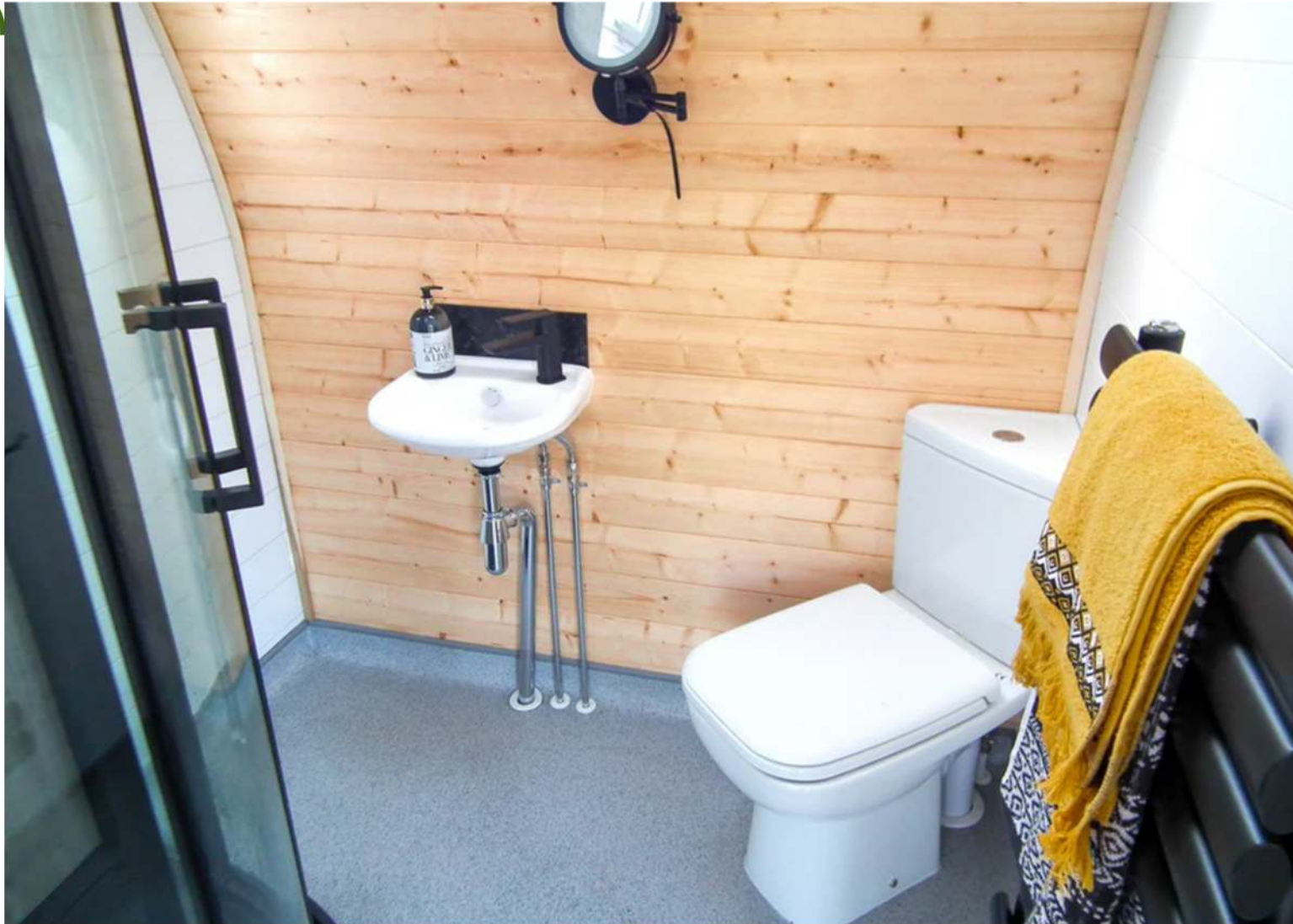


**By Irsa**





By Irsa



By Irsa





By Irsa



# The Langley

The Langley is the largest of our side entry range and stands out from the crowd with its beautiful elegance being enhanced by the slate roof and lead valley

- There are different door options to choose from, but the standard choice is circular window with sidelights
- The living space is open and includes a Free-Standing double bed that can accessed from the side
- Functional kitchen with sink, two-ring hob, three-drawer base unit, dry storage unit, sink base unit and prep unit
- Wardrobe unit adjacent to the bed with open shelves and hanging rail
- Round dining table with two stools
- Water-resistant composite click flooring
- Underfloor heating with optional electric radiator
- Velux-style roof light in the lounge area
- Bathroom with shower, wash hand basin, and WC (option for wet room)
- Hot water boiler mounted on the rear of the building
- Room for a sofa bed.

**By Irsa**





Sleeping	Kitchen Facilities	Bedroom/Dining room	Storage Space	Outdoor Features	Bathroom Amenities	Chassis Details & Pod Dimensions
2 in Free Standing Bed	Food Prep Unit to House Fridge, Microwave, Kettle, Toaster	Double bed, Water-resistant mattress,	Open Fronted Wardrobe with Hanging Space.	Dawn to Dusk sensor	cubicle shower	Rolling Chassis compliant with Planning Requirements
Optional 2 to Sofa Bed	1 No 500 Draw Pack, 2 No 500 Base units with Adjustable Shelves	dining table with two stools	Ample Storage Space Under Bed	Or a Timed Light Sensor	Toilet	Length 5.5 m Width 3.0 m Height 3.0 m
	25mm Kitchen worktop with electric Hob, Brushed	Under Floor Heating	2 No bedside cabinets	Velux Style Roof Light	Basin	
	Kitchen sink with High Neck Tap and Drainer	Space For Sofa Bed		Option for Roof Light in Bathroom	Altro Style Safety Flooring with Welded Cove Skirting	
	Single sink base unit	LVT Water Resistant Click Flooring			Mirror, Towel Rail, Toilet Roll Holder	

By Irsa



By Irsa





By Irsa



By Irsa





By Irsa



By Irsa





By Irsa



By Irsa

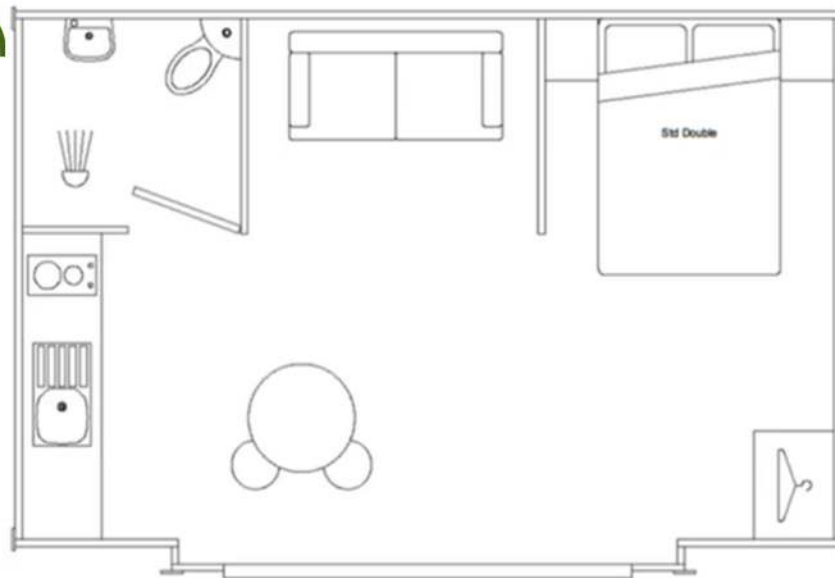






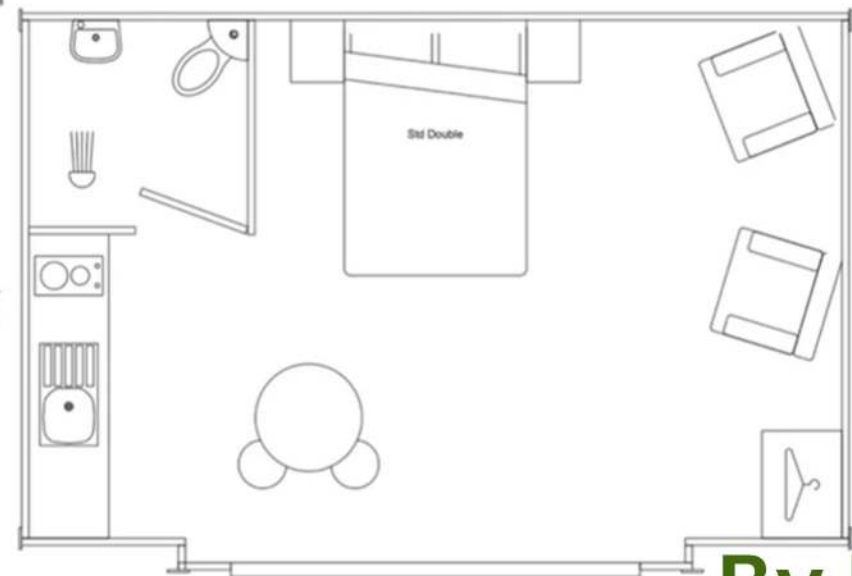
By Irsa





LAYOUT 1 - LH

LAYOUT 2 - LH OPEN



**By Irsa**



# The Titan

The Titan is the largest in our selection and offers a spacious interior that accommodates 2-6 people for sleeping. Measuring 11.5 meters in length, Titan offers a choice of one to three bedrooms, all the while retaining a spacious living area

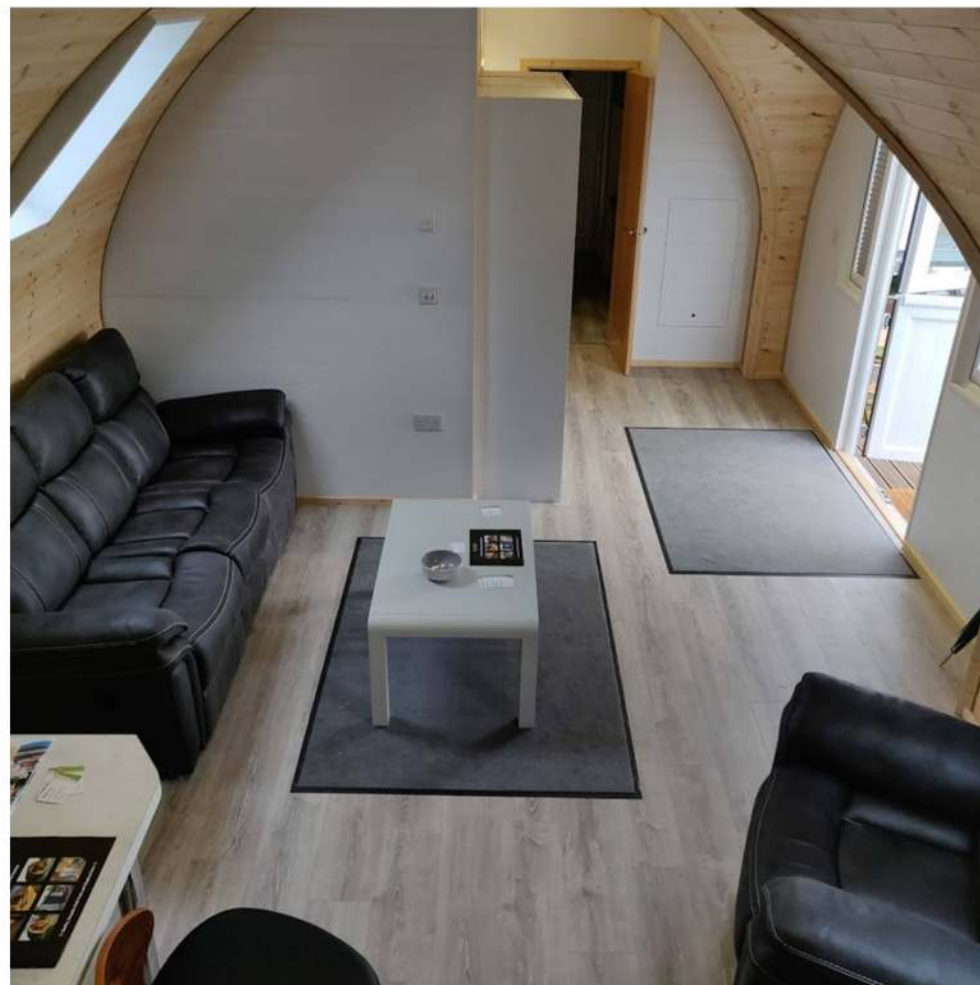
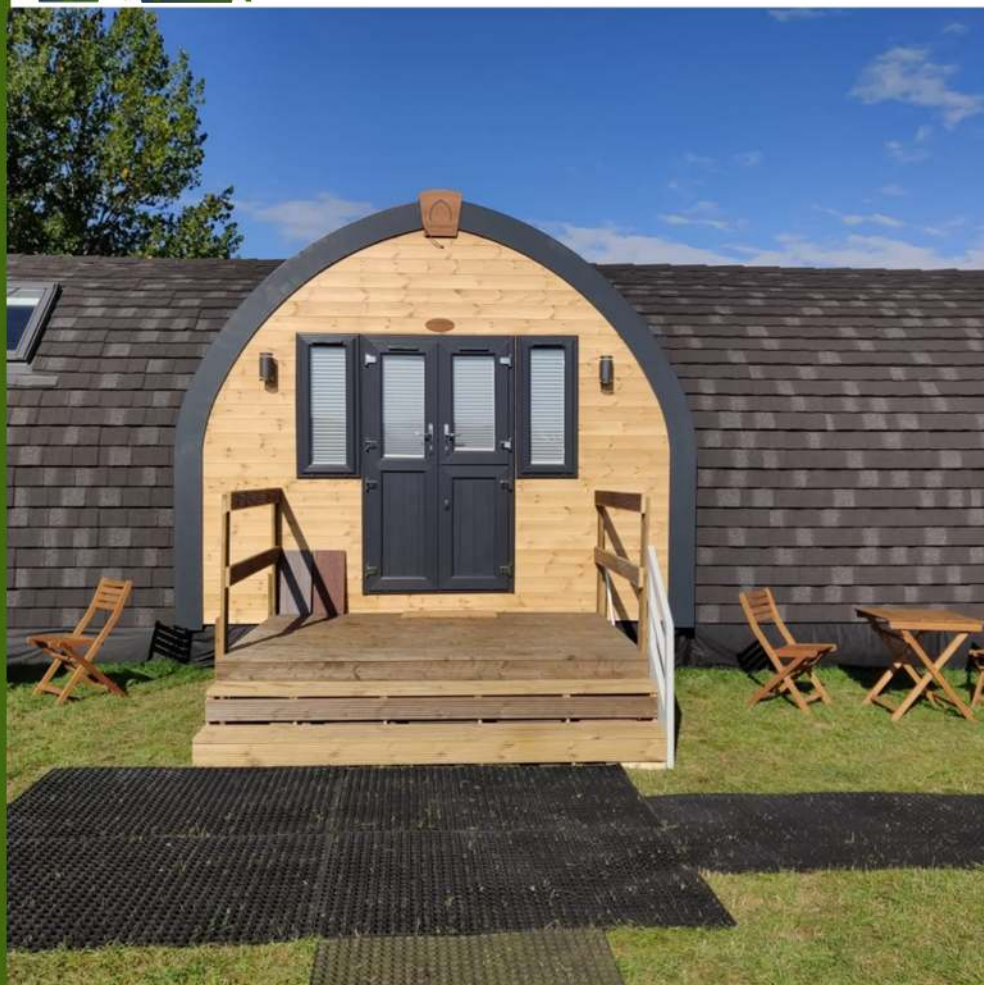
- The Titan offer a fully equipped kitchen area, complete with a sink, a four-ring hob, a three-drawer base unit, ample dry storage units in the kitchen, a sink base unit, an Integrated dishwasher and a washing machine
- Wall-mounted breakfast bar complements the kitchen area.
- Water-resistant composite clicking flooring included
- Can be equipped with underfloor heating or an electric radiator
- Lounge area features a Velux-style roof light-
- Bathroom includes a shower, Bath, wash hand basin and WC
- Hot water boiler mounted at the rear of the building
- Master bedroom comprising a King Size bed, two bedside cabinets, built-in wardrobes with media section, vanity unit, a Large window with opening vents,
- Ample space available for a sofa bed and lounge furniture

**By Irsa**



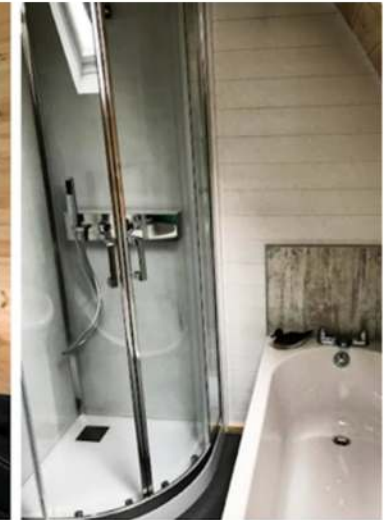


By Irsa



**By Irsa**







Sleeping	Kitchen Facilities	Bedroom/Dining room	Storage Space	Outdoor Features	Bathroom Amenities	Chassis Details & Pod Dimensions
2 in Fixed Bed	Fully functional kitchen with space for integrated appliances	Free-standing king-size bed, Modesty Light above Bed. Built-in wardrobes	Bank of wardrobes to the bedroom.	Dawn to Dusk sensor	cubicle shower and Bath	Rolling Chassis compliant with Planning Requirements
Optional 2 to Sofa Bed	1 No 500 Draw Pack, 3 No 500 Base units with Adjustable Shelves	dining table with two stools	Two storage units in the entrance area	Or a Timed Light Sensor	Toilet	Length 11.5 m Width 4.2 m Height 3.0 m
	25mm Kitchen worktop with 4-ring electric Hob, Brushed Aluminium	Under Floor Heating	Two bedside cabinets	Velux Style Roof Light	Basin	
	Kitchen sink with High Neck Tap and Drainer	Space For Sofa Bed		Option for additional Roof Light	Altro Style Safety Flooring with Welded Cove Skirting	
	Breakfast bar	LVT Water Resistant Click Flooring		Optional Porch with Decking	Mirror, Towel Rail, Toilet Roll Holder	By Irsa





## The Shepherd Hut One

Our hut takes inspiration from traditional design, reflected in its size and interior. With room for 2 to 4 individuals, this adaptable hut provides a delightful retreat for couples or families, offering a distinctive alternative to a conventional garden room.

- There are various door options available, with the standard being a circular window with side lights
- The living space is open and includes a built-in double bed accessible from the side
- The kitchen area is fully functional, equipped with a sink, a two-ring hob, a three-drawer base unit, a dry storage unit, a sink base unit, and a food prep unit
- Adjacent to the kitchen, there is a wardrobe unit with open shelves and a hanging rail.
- A circular dining table is accompanied by four stools
- The flooring is a water-resistant composite click, and there is underfloor heating with the option for an electric radiator
- Brightness is provided by a Velux-style roof light to the lounge area
- The bathroom includes a shower, a wash hand basin, and a WC, with the option for a wet room
- A hot water boiler is mounted on the rear of the building

**By Irsa**



<u>Sleeping</u>	Kitchen Facilities	Bedroom/Dining room	Storage Space	Outdoor Features	Bathroom Amenities	Chassis Details & Pod Dimensions
2 in Fixed Bed	Food Prep Unit to House Fridge, Microwave, Kettle, Toaster	Built-in Double bed, water-resistant mattress, Modesty Light	Open Fronted Wardrobe with Hanging Space.	Dawn to Dusk sensor	cubicle shower	Rolling Chassis compliant with Planning Requirements
Optional 2 to Sofa Bed	1 No 500 Draw Pack, 2 No 500 Base units with Adjustable Shelves	dining table with two stools	Ample Storage Space Under Bed	Or a Timed Light Sensor	Toilet	Length 5.5 m Width 3.0 m Height 3.0 m
	25mm Kitchen worktop with electric Hob, Brushed	Under Floor Heating		Velux Style Roof Light	Basin	
	Kitchen sink with High Neck Tap and Drainer	Space For Sofa Bed		Option for Roof Light in Bathroom	Altro Style Safety Flooring with Welded Cove Skirting	
	Single sink base unit	LVT Water Resistant Click Flooring		Porch with Decking	Mirror, Towel Rail, Toilet Roll Holder	

**By Irsa**





By Irsa



By Irsa





By Irsa



By Irsa





By Irsa

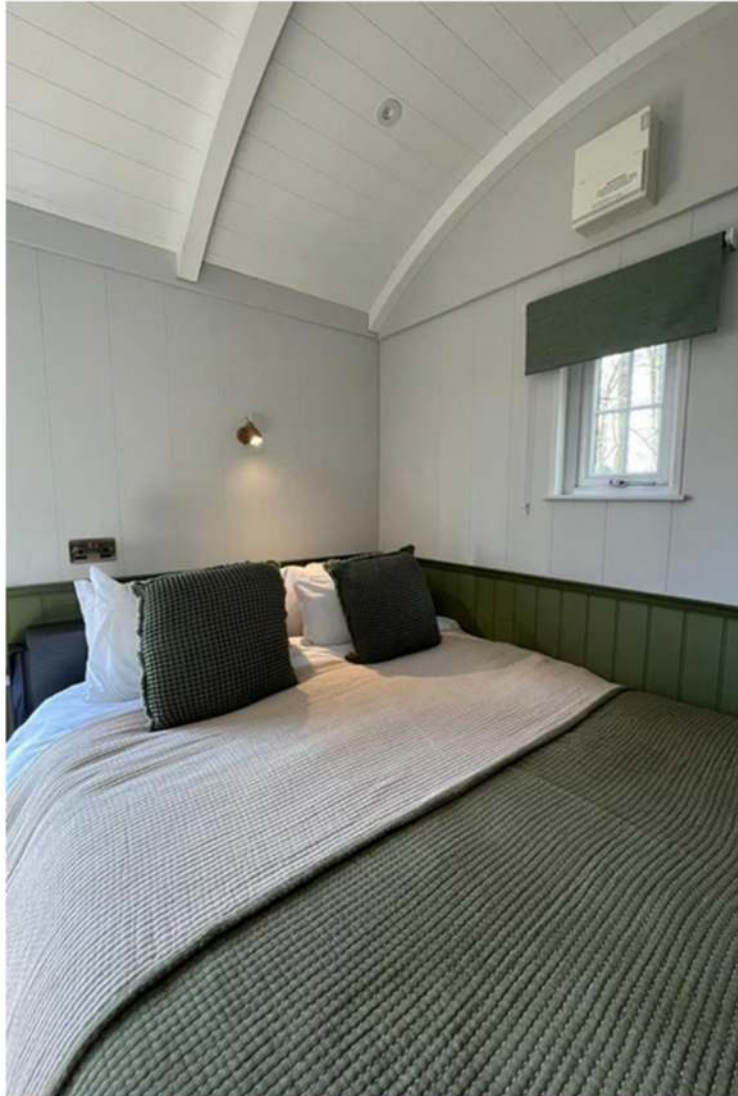


By Irsa





**By Irsa**



**By Irsa**





Thank you for your interest!

We're here to help you find the best solution for your needs.

Get in touch today:

📞 01482 893251

✉ john@mipod.solutions

Irsa@mipod.solutions

🌐 https://mipod.solutions/

📍 Unit 4 West End Works

Staithes Road

Preston

HU12 8TJ

➡ Follow us on social media for updates and special offers!

https://www.facebook.com/MipodSolutions/

https://www.instagram.com/mipod.solutions/

**By Irsa**